



GIS247 IN FOCUS

GIS247 – expert knowledge, flexible training. Providing e-learning for GIS users.

GIS247 Course Updates

Much of the course development work in the past month has been on the version 10.0 courses for ArcGIS. This has been to repackage all the course presentations to make them multi-style presentations – matching the training material style and structure for the version 10.1 and 10.2 courses. A multi-style presentation means that there is one presentation per section with a table of contents so that users can jump between topics within the presentation if they want.



Courses for version 10.0 which have been upgraded to multi-style presentations are:

- [Beginners Guide to ArcGIS v10.0](#) – full course with presentations & exercises
- [Intermediate Guide to ArcGIS v10.0](#) – full course with presentations & exercises
- [Mastering Guide to ArcGIS v10.0](#) – full course with presentations & exercises
- [Advanced Guide to ArcGIS v10.0](#) – full course with presentations & exercises

New training that is on its way:

- QGIS Training – in development
- Mini Modules for ArcGIS v.10.2 – over 330 presentations
- Beginners Guide to MapInfo v12.0 – full course with presentations & exercises
- Upgrading from ArcGIS v10.0 to v10.2 – full course with presentations & exercises

Click <https://www.gis247.com/catalog> to see this latest training.

If you would like to see any particular training course, modules or new software/topics become available please do let us know. Email us at info@GIS247.com



GIS247 News

With Halloween and Guy Fawkes (Bonfire Night) less than a week apart it's been busy in the UK with festivities. GIS247's staff have been taking full part and enjoying the local celebrations!



GIS247 E-learning Courses

- ArcGIS - beginner through to advanced
- MapInfo - beginner through to advanced
- ArcGIS Extensions
- GIS Essentials

ArcGIS and MapInfo courses are available in all software versions.



GIS247

GIS247 Newsletter Issue 4

November 2013

www.gis247.com

Course in Focus

Rachel's experience of Mastering ArcGIS

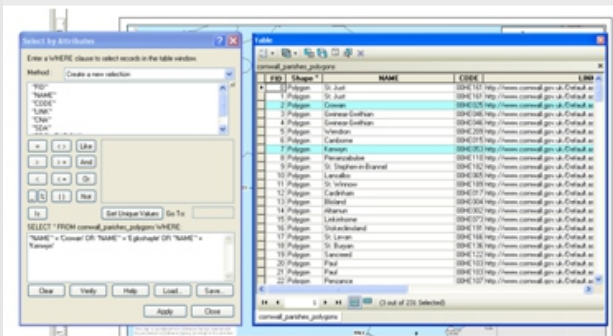
The [Mastering ArcGIS](#) course is a comprehensive online training programme that covers all the software's key functions plus the more complex advanced spatial and attribute analysis functions. It is suitable for new users, as long as they have basic operating system skills, and also for experienced users. Rachel Barkle from Cornwall Council has followed the Mastering ArcGIS course, this is her experience of GIS247's e-learning:

"How does the saying go 'you learn something new every day' well that's certainly the case when I started training through GIS247.

In 2011 Cornwall Council began offering their GIS users the opportunity to access the online training courses with GIS247. It was a great resource and it's allowed me to explore ArcGIS further and expand on my 13 year experience."

"The beauty of the training is that I could fit it in here and there between my daily tasks, which works well and the material provided is excellent. Supported and encouraged by the council I've now successfully completed two courses - Mastering ArcGIS v10.0 and the Advanced Guide to ArcGIS v10.0 together with several modules from other courses that interested me."

"Through the training, I've discovered that ArcGIS offers so much more and now I'm thinking slightly differently and looking for new ways of working incorporating what I've learnt."



"I've certainly found the section covering feature analysis useful when extracting specific data from a large set. It's taught me how I can drill down through the data, filtering / adding and subtracting information quickly and effectively leaving me with the desired result. This example might not seem revolutionary to most of you out there but it's sometimes the smallest things that make the biggest impact!"

"If you have the opportunity to access GIS247 online training don't turn it down, you never know where it may lead you."

Rachel has completed both the GIS247 Mastering and Advanced Guide to ArcGIS courses, further developing her knowledge and technical capabilities. She gained distinction in both these training course assessments. Well done Rachel!

Access the full article on our website www.gis247.com/testimonial This article has been put together in collaboration with Rachel Barkle, who is a Senior Development Support Officer in the Planning Delivery Team at Cornwall Council.

Question of the Month: How do I keep track of the training I have done?

Every GIS247 user has a personal My GIS247 home page. This page automatically populates as it records that you have completed each part of a course that you are working through; that you have watched the presentations and/or completed the hands-on exercise.

Example of My GIS247 home page progress tracking:

Below is a list of the trials, courses and modules that you have viewed so far.

Don't forget that you are able to re-run any of the presentations and re-do any of the exercises as many times as you wish.

Training Progress

This box will automatically list the sections from training courses and other modules that you have fully or partially completed. It will not list sections or modules where you have completed no parts. A **green** dot indicates that all parts of a course section (presentations + exercises) or module have been completed. An **orange** dot indicates that only some of the parts of a course or module have been completed.

ArcGIS 10.0

Beginners Guide to ArcGIS 10.0

- [Section 1 : The ArcGIS Software](#)
- [Section 2 : Organising GIS Data](#)

Your progress is listed with either a green or orange coloured dot next to it. A green dot indicates that you have completed both the presentation and exercises for that course section. An orange dot indicates that you have something left to complete. To continue your training from where you left off you can click on the link that is shown in the Training Progress list and it will jump you to that part of the course so you can continue.



NASA astronaut Karen Nyberg took this photo of Super Typhoon Haiyan from her home on the International Space Station on Nov. 9, 2013, one day after Haiyan devastated the Philippines. Credit: NASA via Karen Nyberg/@Astro_KarenN

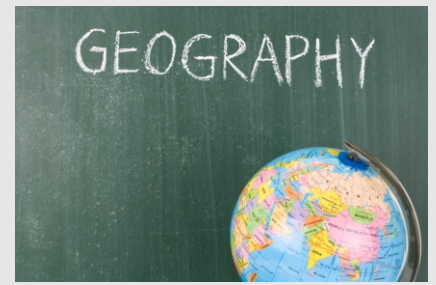
Interesting in the world of GIS...

Super Typhoon Haiyan

Super typhoon Haiyan, which battered the central Philippines earlier this month, may perhaps be the most powerful tropical cyclone to ever make landfall with sustained winds estimated at 195 mph (~315 kph). This powerful storm has caused massive devastation across the Philippines, affecting close to 10 million people, with thousands more feared dead.

In addition to the fierce winds and powerful surge, Haiyan brought huge amounts of rainfall to the central Philippines along with Tropical Storm Thirty and another tropical disturbance (90w), which all passed through the the central Philippines within ten days.

Read the full article and see footage of Super Typhoon Haiyan from the International Space Station on the NASA website www.nasa.gov



E-Learning Benefits

E-learning is undoubtedly the most **CONVENIENT** way to undertake training that there is. Both in terms of time and location.

The training can be accessed when it is needed so users can gain the additional knowledge they seek at the optimum time. There is no waiting for a course to be scheduled or trying to co-ordinate with others in a group. You can find out what you need, when you need it.

Additionally the location of the training is incredibly convenient. It can be accessed from your desk at work, even in an open-plan office headphones work very well, at home at a desk or sitting comfortably on the sofa. There have even had reports of people logging in for a spot of training from their garden or even on holiday! There are no 'hassle factors' of needing to travel or any of the associated costs or inconvenience.

Read about all the benefits that e-learning has to offer on our website www.gis247.com/benefits_you

Our mailing address is:

GIS247 (Sological Solutions)
15 Whitehall Court, Upper Saxondale
Radcliffe-on-Trent
Nottingham, Nottinghamshire NG12 2NJ
United Kingdom

E-mail: info@gis247.com

Tel: +44 (0) 115 933 6633

Website: www.gis247.com

www.gis247.com