

TRAINING DAYS

Sponsored by GIS247.com

LATEST EDUCATIONAL INFORMATION ON TRAINING COURSES, DISTANCE LEARNING; COMPANY TRAINING DAYS, SEMINARS WORKSHOPS CURRENTLY AVAILABLE. THIS SECTION WILL ALSO INCLUDE COMPETITIONS, STUDENT OFFERS AMONG OTHER EXCITING OPPORTUNITIES.

GEODATA 2011 – THE FREE EVENT ON GEOGRAPHIC INFORMATION

As organisations come to terms with the realities of the recession it is more important than ever to ensure that they get more “bang for their buck” without compromising quality.

This year's GeoDATA programme draws together leading professionals from the geographic industry to demonstrate how, through the use of clever, cost-cutting strategies help organisations work more resourcefully and achieve location efficiencies.

- Leeds 7 April 2011
- Dublin 12 May 2011
- Edinburgh 10 November 2011
- Belfast 17 November 2011

GeoDATA 2011 partners include: 1Spatial, AGI, Avineon, Autodesk, Cadcorp, Compass, DSM-Geodata, Environment Systems, Envitia, GeoDirectory, KOREC, KOREC Ireland, Leica, Ormston Technology Ltd, STAR-APIC, The British Cartographic Society, The Geoinformation Group, Topcon GB, Training4GIS.

GeoDATA 2011 is organised by Training4GIS, the training & consultancy division of The Geoinformation Group.

Seminar Dates (UK):

- London 30 March 2011
- Birmingham 5 April 2011

Intergraph (UK) Ltd. has continued its long running support of the UK's Armed Forces by donating GIS software to the Royal School of Military Survey. Used during the teaching of Spatial Analysis on the Geospatial Intelligence MSc and MSc research, the GeoMedia based software allows students to connect to multiple sources of data for analysis and map production. Data sources can vary from static mapping files, automatically updated raster data or full motion video, all being viewed within an interactive workspace. Both 2D & 3D views can be chosen, allowing for a more realistic view of the complicated data with dynamic queries in a multi-user environment.



To include your Company Seminar/Training dates, or University Courses in this section, please ring:

Micki: + 44 (0) 01638 732566
Mai: + 44 (0) 1223 279151

SKILLED USERS ARE THE KEY TO GIS SUCCESS

The best investment any organisation can make into GIS is in the people who will be implementing and using the software and data.

These ‘users’ need to develop key skills and the confidence to use GIS effectively and produce results accurately and efficiently. Providing a constant source of support and knowledge is the “learning on demand” approach of GIS247.com. Offering a range of full training courses and a library of technical modules, GIS247 is proven to support the development of all user levels, from novices to experts, as well as offering incredible value for money. For example one customer has calculated that the e-learning approach of GIS247 has delivered a return on investment of over 900%.

Providing an “always on” source of training provides benefits

that extend beyond budgetary advantages. GIS247 customers have discovered that giving users access to training on demand has raised the overall skill level of those users, enabling novices to become self-sufficient in data preparation and map production whilst freeing experts to concentrate on more high-level tasks. This approach also unearths hidden talents; users whose GIS skills may have gone untapped under the constraints of traditional training programmes but are able to flourish and be noticed by developing their skills to the benefit of the entire organisation. Real life case studies demonstrating such achievements can be viewed at our web site.

GIS247 offers a range of courses in ArcGIS and MapInfo and we have also added a suite of ArcGIS 10 courses. All are available on-line and are accessible 24/7. Simply go on-line and register for a free trial of GIS247.

ATTENTION: We are providing a series of Webinars to show how easy GIS247 is to use and how effective the training on demand approach is. Simply register to attend at www.GIS247.com

Bluesky's education resources company Wildgoose has launched a range of resources designed to promote and support the teaching of geography in schools. Wildgoose has designed 'Atlas Skills True or False' a set of double-sided cards to give pupils practice in using and developing atlas skills and to cultivate knowledge of the world. Wildgoose has also increased its range of atlases, globes and maps and reduced the price of their award winning aerial photography products.



ESRI UK GIS TRAINING – AYLESBURY UK

- Developing Applications with ArcGIS Engine (.NET)** 2 Days
- ArcGIS Server: Web Administration using .NET** 3 Days
- Building Web Applications using the ArcGIS API for JavaScript** 2 Days
- Building Web Applications using the ArcGIS API for Silverlight/WPF** 2 Days
- ArcGIS Desktop 10 – Part 1** 1–2 Days
- ArcGIS Desktop 10 – Part 2 (Fast Track)** 3 Days
- Introduction to ArcGIS Server 10** 2 Days
- ArcGIS Desktop 10 for Local Authorities – Part 1** 2 Days
- Introduction to Geoprocessing Scripts Using Python 10** 3 Days
- Introduction to the Multiuser Geodatabase 10** 2 Days
- Working with the ArcGIS ModelBuilder** 1 Day

CDR GROUP – HOPE VALLEY UK

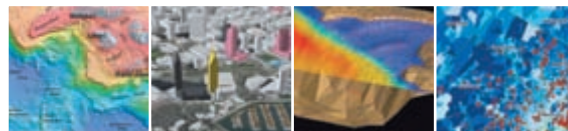
TRAINING COURSE	START DATE	TRAINING COURSE	START DATE
MapInfo Foundation Level	12/04/2011	MapInfo Foundation Level	16/08/2011
MapInfo Data Creation	03/05/2011	MapInfo Advanced Level	13/09/2011
MapInfo Advanced Level	10/05/2011	MapInfo MapBasic Essentials	20/09/2011
MapInfo Foundation Level	24/05/2011	MapInfo Foundation Level	18/10/2011
MapInfo Foundation Level	21/06/2011	MapInfo Advanced Level	08/11/2011
MapInfo MapBasic Essentials	28/06/2011	MapInfo Foundation Level	22/11/2011
MapInfo Advanced Level	12/07/2011	MapInfo Foundation Level	13/12/2011
MapInfo Foundation Level	26/07/2011		

UNIGIS

Study for a postgraduate qualification in GIS by distance learning

UNIGIS is a partnership between Huddersfield, Manchester Metropolitan and Salford universities that delivers postgraduate GIS courses by distance learning. With over twenty years experience, and as a founder member of the prestigious UNIGIS International network, we provide high quality courses that meet the requirements of busy GI professionals and of those seeking to enter the GIS industry.

Our courses can be completed entirely by distance learning, although we also offer optional residential workshops. Assessment is by coursework only - there are no examinations. We support you with personal tutors, online help and a dedicated UNIGIS office.



WE OFFER:

- Flexible entry requirements
- Specialist pathways
- Course modules supported by key textbooks, software and on-line resources
- Flexible study - distance learning plus optional residential workshops
- No examinations - full continuous assessment, plus credit for prior learning or experience
- Networking with an international community of GIS professionals

Find out why the UNIGIS postgraduate courses are so successful: call +44 161 247 1581, fax. +44 161 247 6344, email unigis@mmu.ac.uk, or visit our web site at <http://www.unigis.org/uk>



Educating GIS Professionals Worldwide

www.unigis.org/uk